



Hospice House

CENTRAL OKANAGAN

**YOUR IMPACT TO HOSPICE HOUSE AND
PALLIATIVE CARE IN COMMUNITY**

KGHFOUNDATION

WITH GRATITUDE



We are deeply grateful for your generous support, which extends not only to the Central Okanagan Hospice House but also enhances palliative care throughout our community.

Central Okanagan Hospice House serves as a sanctuary where patients receive care infused with compassion and dignity. This home-like environment enables individuals to focus on cherishing precious moments with their loved ones. The serene surroundings and personalized care exemplify the patient and family-centered care philosophy upheld by Interior Health.

Your contributions have been instrumental in providing the essential comforts and specialized equipment that uphold the highest standard of care. This report details how your donations have been utilized and the significant impact they have made on the lives of individuals and their families, both within Hospice House and across the broader community.



PATIENT AND FAMILY LOUNGE RENOVATION

Transforming spaces for comfort

With the invaluable support of our donors, a designated space has been created to offer families a private area away from the patient's bedside. This thoughtful addition serves multiple essential purposes: it provides a serene environment for family meetings, facilitates the sensitive process of funeral planning, and offers a quiet retreat for gathering thoughts and finding moments of solace.

This dedicated space acknowledges the emotional and logistical needs of families during challenging times, allowing them to discuss care decisions, plan for the future, and support each other in a setting that respects their need for privacy and reflection.



Before



After

COMFORT AND CARE ITEMS

Enhancing Patient Care

Donor support helped provide a number of comfort items for patients, families and staff at Hospice House. A few examples are highlighted below:

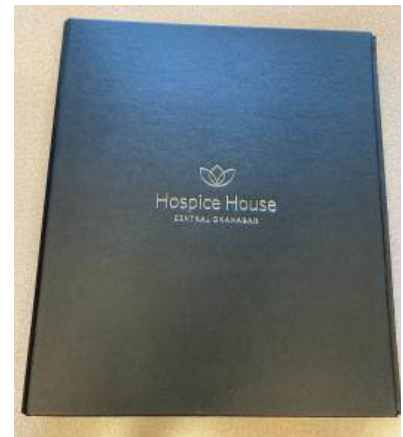
- Comforts for the Caregiver: A tea and coffee service for family members. At end of life, families and visitors go above and beyond to support patients, whether it is at their bedside throughout the day/night or tirelessly ensuring that their affairs are in order. A hot coffee or tea during these difficult times is often a small but impactful gesture during a high stress time.
- Oxygen Concentrators: Oxygen supplementation significantly enhances comfort for palliative patients, which in turn provides peace of mind to their loved ones. Hospice House currently has seven oxygen concentrators. To meet the growing needs of patients, especially with increasing acuity, there is an urgent need to expand capacity. The goal is to purchase an additional 10 units, as the existing resources are fully utilized, to ensure that every patient receives the comfort they deserve.
- TVs for Patient Rooms: Recognizing the importance of comfort and sense of normalcy for patients, Hospice House undertook a significant update of its facilities by replacing the televisions in patient rooms. With the majority of the existing units frequently breaking down and compromising the quality of the care environment, this replacement ensures that patients can enjoy reliable access to entertainment and relaxation during their stay, enhancing their comfort and overall experience.
- Patient Handbooks: Handbooks are placed in each of the 24 rooms, serving to provide patients and their loved ones with detailed explanations of what to expect during their stay. Although patients and families receive verbal information upon admission, these handbooks offer a valuable resource for answering questions that may arise later, ensuring that all individuals feel informed and supported throughout their time in care.
- Bed Mattress Upgrade: All 24 patient bed mattresses are being replaced to allow patients to remain as comfortable as possible throughout their time at the House.



New television in a patient room



Oxygen Concentrator



Patient Handbook

MAID ROOM

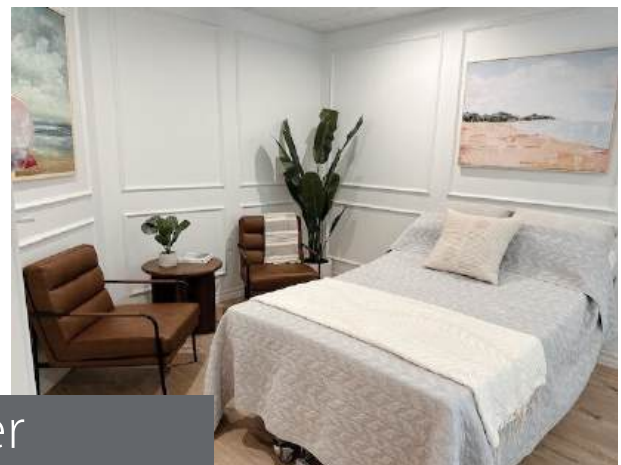
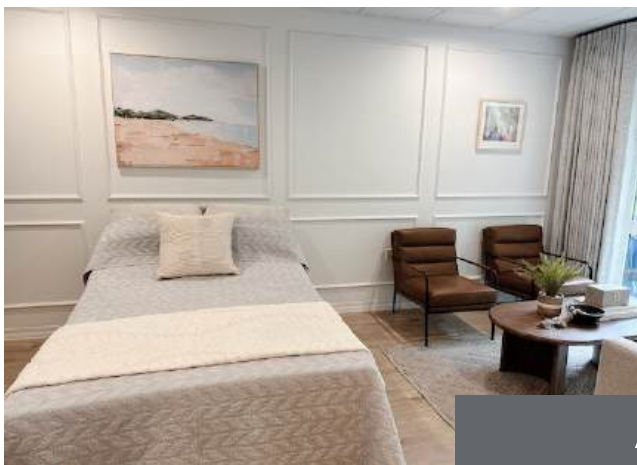
Empowering End-of-life Decisions

MAiD, standing for Medical Assistance in Dying, is a collaborative initiative supported by Interior Health and federal guidelines, which empowers patients to make informed choices about their end-of-life care.

Due to the generosity of our donors, a serene and beautiful space has been established at Hospice House. This dedicated area is specifically designed for patients and their loved ones to spend meaningful time together during the final stages of life, ensuring comfort and dignity at the end of life.



Before



After

PALLIATIVE CARE IN COMMUNITY

Extending Compassion

Donor support has also helped to support Palliative Care within our community. A few examples are highlighted below:

- Palliative Care Rooms in Kelowna General Hospital: The 3rd Floor Medical Unit at KGH has dedicated four private rooms designed to offer end-of-life care. These patient rooms are less clinical and provide a more holistic environment to ensure comfort and support for patients and their families.
- Brookhaven Care Centre Palliative Room Chairs: Comfort is crucial in creating a supportive environment for residents and their families. Unfortunately, the current cloth recliner chairs no longer meet the rigorous safety and infection control protocols. Upgrading these chairs will significantly improve both comfort and hygiene, enhancing the experience in palliative care, where these elements are of the highest importance.
- Palliative Care Cart at Three Links Manor (TLM): The mobile Care Cart is stocked with essential items to support the emotional and practical needs of families during their stay. It includes emotional support resources like grief books and LED candles, practical items such as toiletries and blankets, and relaxation aids like coloring books and puzzles, as well as refreshments like coffee and snacks. This thoughtful provision, made possible through donor support, significantly enhances comfort and care for families during challenging times



Palliative Care Cart at TLM

Thank You



Your donation has given families the gift of time and togetherness. Because of you, there are patients and families across the Central Okanagan whose pain and grief have been met with precious comfort.

On behalf of the patients and families who benefit most from your support, thank you.

Giving Changes Everything.

